



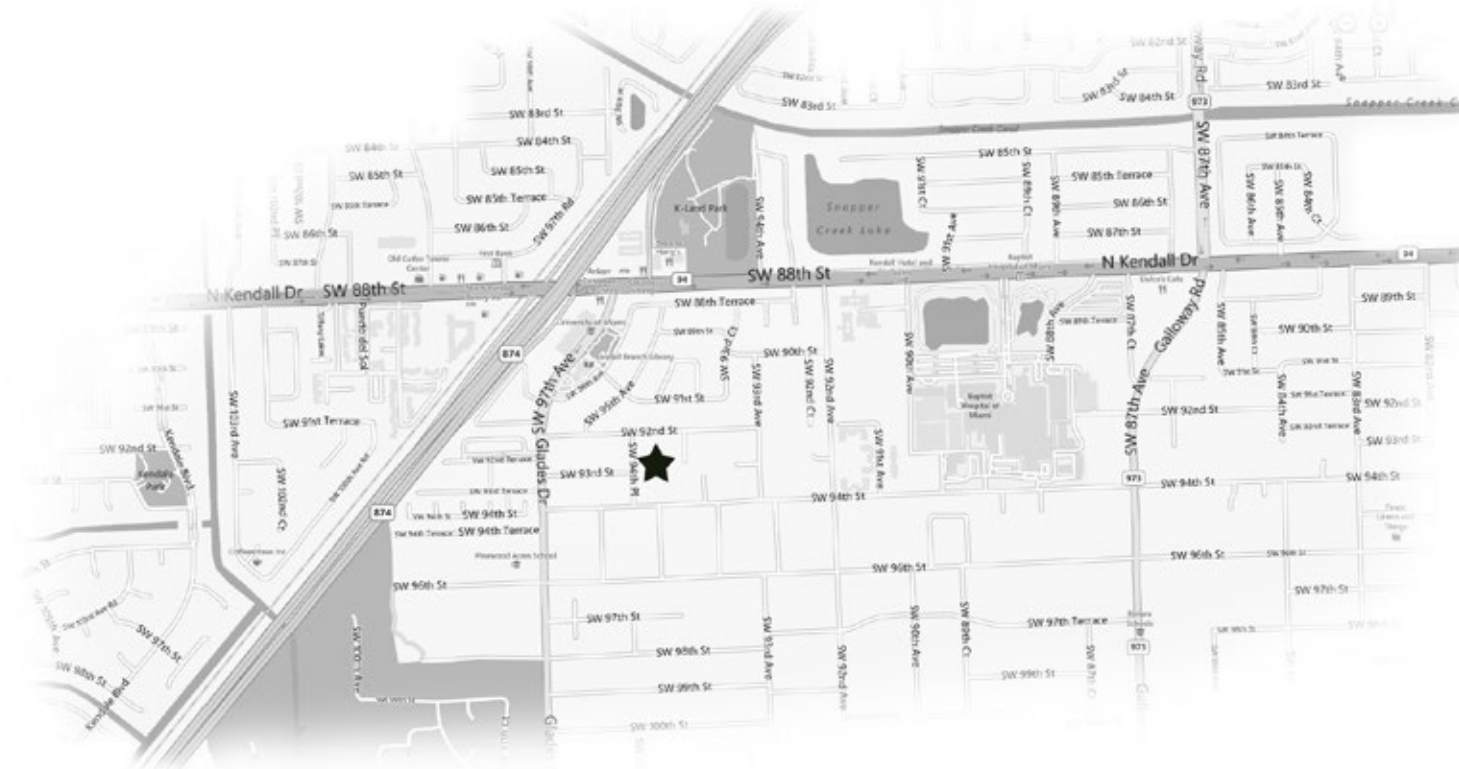
Cherry Pines

Miami, Florida

The information, plans, text, and graphics are artistic representations which may contain features and options that vary from the actual model. Listed dimensions and square footage are estimated and should not be relied upon as to the homes exact or actual size. VLP Holdings, inc. reserves the right to change any and all pricing, features, specifications, floor plans, dimensions and elevations without prior notice.

An Exciting New Development by

VLP GROUP
develop.design.build.



Property Features

- Four Spacious Bedrooms
- Study
- Laundry Room
- Three Full Bathrooms
- Powder Room

Total Area: 5480 Sq Ft
A/C Area: 4050 Sq Ft

+34,000 Sq Ft Lot

Four New Homes on a Quiet Cul-de-sac Street

Starting at
\$ 1,290,000

Cherry Pines is situated in the East Kendall neighborhood of Miami-Dade County, within one mile of the prestigious Baptist Hospital. This four home enclave perfectly balances the benefits of stronger building codes a new home offers with the peace and tranquility of a long established neighborhood. All corresponding public schools in the district have received an A rating by the Florida Department of Education. Surrounded by a number of parks and recreational facilities, including the Boys and Girls Club, this centrally located development allows quick access to all major highways, as well as some of South Florida's premier retail and dining establishments. Cherry Pines offers the ideal combination of an urban feel while maintaining a connection to nature.

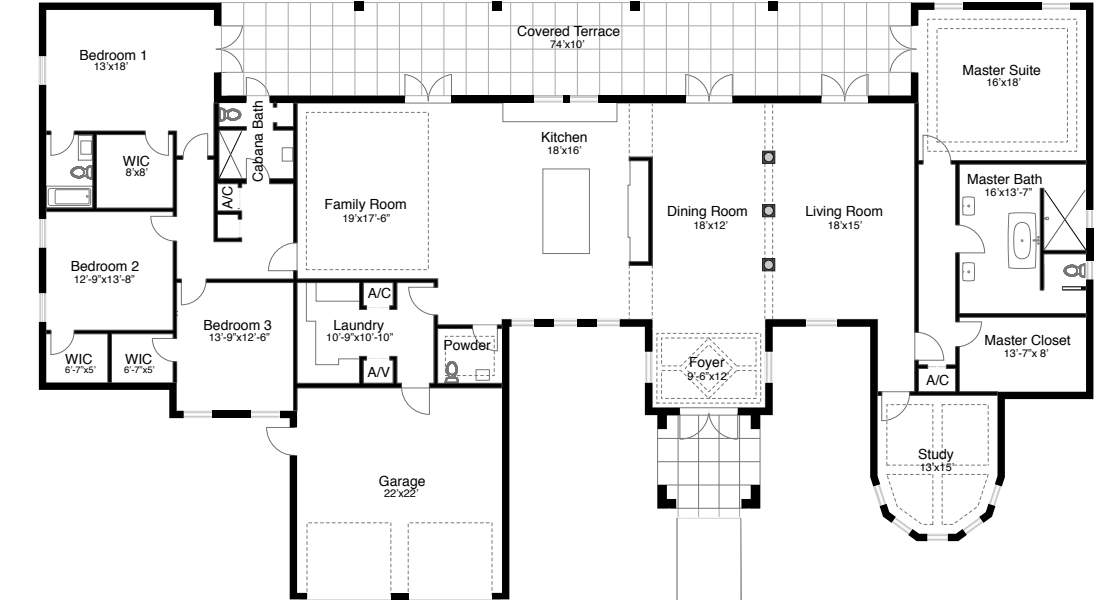


Exterior Features

- Impact Resistant Windows
- 8' High Impact Resistant French Doors
- 11' High Solid Wood Impact Resistant Front Door With Decorative Glass Inlay and Transom
- Raised Panel wind rated Garage Doors with Remote Opener
- Smooth Stucco Finish
- Decorative Keystone Trim (as per elevations)
- Natural Stone Flooring in Covered Entry
- Concrete Pavers
- Spanish Tile Roof
- Professionally Landscaped and Sodded Home Site

Interior Features

- Open Floor Plan
- Spacious Bedrooms with Large Walk in Closets
- 18"x18" Stone Floors in Living Areas
- Wood Floors Throughout Bedrooms
- 10' High Ceilings
- Decorative Recessed Trays in the Foyer, Family Room, Study and Master Bedroom
- Crown moldings in Foyer, Living, Dining, Family, Kitchen, and Master Bedroom
- Interior Decorative Columns
- 8' High Raised Panel Solid Core Interior Doors
- High Efficiency Zoned Cooling and Heating System
- Recessed Lighting Throughout
- Pre-wired for Home Automation



The information, plans, text, and graphics are artistic representations which may contain features and options that vary from the actual model. Listed dimensions and square footage are estimated and should not be relied upon as to the homes exact or actual size. VLP Holdings, inc. reserves the right to change any and all pricing, features, specifications, floor plans, dimensions and elevations without prior notice.

Kitchen Features

- LG® Integrated Appliances
- Under Counter Wine Refrigerator
- Granite/Marble Waterfall Countertops with Full Height Backsplash
- Center Cooking Island
- Breakfast Bar
- Modern Wood Cabinetry with Pull Out Pantry
- Kohler® Fixtures



Master Bathroom Features

- Kohler® Fixtures and Faucets Throughout
- Modern Tile Feature Wall
- Freestanding Soaking Tub
- Separate Shower With Frameless Glass Enclosure and Rain Shower
- Dual Vanities With Granite/Marble Countertops
- Fully Enclosed Water Closet

Bathroom Features

- Kohler® Fixtures and Faucets Throughout
- Frameless Glass Enclosure
- Wood Cabinetry
- Granite/Marble Countertops

Laundry Room Features

- LG® High Capacity Washer and Dryer
- Integrated Laundry Sink
- Built-in Storage



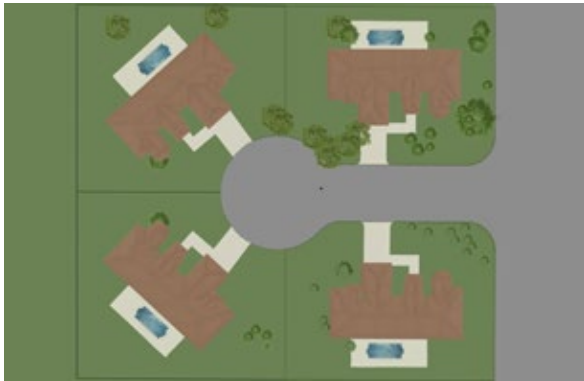


Exclusive Listing



(305) 444-7020

Miriam Velasco-Esquivel
(305) 796-5488



VLP GROUP

develop.design.build.

www.vlpgroup.co

The information, plans, text, and graphics are artistic representations which may contain features and options that vary from the actual model. Listed dimensions and square footage are estimated and should not be relied upon as to the homes exact or actual size. VLP Holdings, inc. reserves the right to change any and all pricing, features, specifications, floor plans, dimensions and elevations without prior notice.